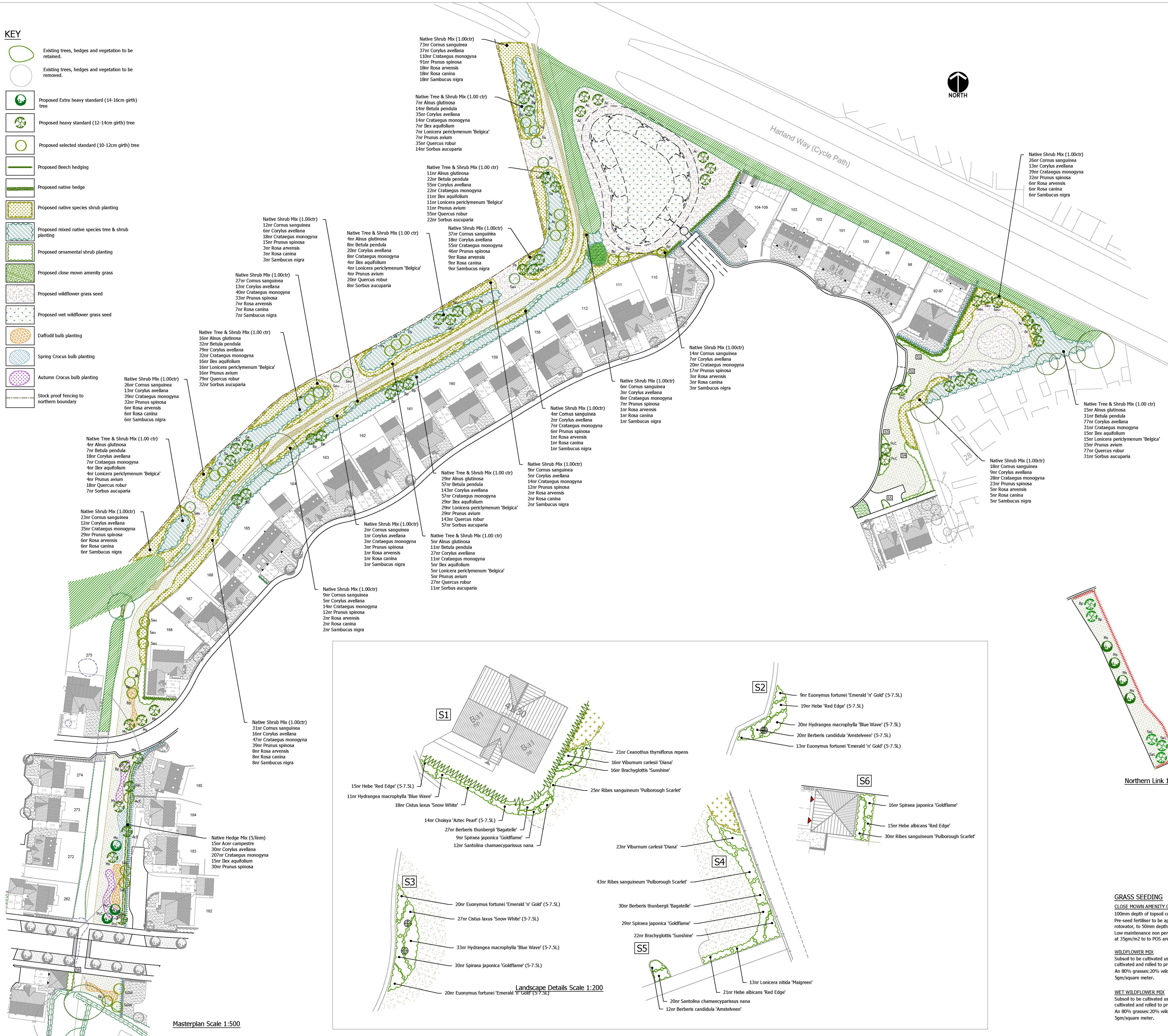


KEY

- Existing trees, hedges and vegetation to be retained.
- Existing trees, hedges and vegetation to be removed.
- Proposed extra heavy standard (14-16cm girth) tree
- Proposed heavy standard (12-14cm girth) tree
- Proposed selected standard (10-12cm girth) tree
- Proposed Beech hedging
- Proposed native hedge
- Proposed native species shrub planting
- Proposed mixed native species tree & shrub planting
- Proposed ornamental shrub planting
- Proposed close mown amenity grass
- Proposed wildflower grass seed
- Proposed wet wildflower grass seed
- Daffodil bulb planting
- Spring Crocus bulb planting
- Autumn Crocus bulb planting
- Stock proof fencing to northern boundary



PLANTING SCHEDULES

ORNAMENTAL PLANTING SCHEDULE

Nr	Name	Ht in cm	Pot(L)	Density
12	Berberis candidula 'Amstelveen'	25-30cm	3L	5.00
20	Berberis candidula 'Amstelveen' (S-7.5L)	30-40cm	S-7.5L	5.00
57	Berberis thunbergii 'Bagatelle'	20-30cm	3L	5.00
38	Brachyglottis 'Sunshine'	30-40cm	3L	4.00
21	Ceanothus thyrsiflorus repens	30-40cm (D)	3L	5.00
14	Choisy 'Aster Pearl' (S-7.5L)	40-60cm	S-7.5L	3.00
18	Cistus ladanus 'Snow White'	30-40cm	3L	5.00
27	Cistus ladanus 'Snow White' (S-7.5L)	40-60cm	S-7.5L	4.00
62	Euonymus fortunei 'Emerald 'n' Gold' (S-7.5L)	30-40cm (D)	S-7.5L	4.00
36	Hebe albicans 'Red Edge'	20-30cm	3L	5.00
34	Hebe 'Red Edge' (S-7.5L)	30-40cm (D)	S-7.5L	5.00
11	Hydrangea macrophylla 'Blue Wave'	30-40cm	3L	4.00
53	Hydrangea macrophylla 'Blue Wave' (S-7.5L)	40-60cm	S-7.5L	3.00
13	Lonicera nitida 'Maigreen'	30-40cm (D)	3L	4.00
98	Ribes sanguineum 'Pulborough Scarlet'	40-60cm	3L	5.00
32	Santolina chamaecyparissus nana	20-30cm	3L	6.00
81	Spiraea japonica 'Goldflame'	30-40cm	3L	4.00
30	Spiraea japonica 'Goldflame' (S-7.5L)	40-60cm	S-7.5L	4.00
39	Viburnum carlesii 'Diana'	30-40cm	3L	4.00

All shrub material shall be first quality, sturdy, well rooted non-refrigerated stock with well branched heads and fibrous root systems. Shrubs shall be planted into 450mm good quality fibrous topsoil incorporating organic compost and slow release fertiliser in accordance with all good horticultural practice. All plant material shall be a minimum of 3L pot size unless otherwise specified and conform to BS3936 Part 1 and BS 4128. Finished beds shall be lightly forked over and dressed with 50mm coarse forest bark mulch.

TREE SCHEDULE

SPECIES	Ht in m	NUMBERS REQUIRED		
		3.0-3.5	3.5-4.25	4.25 min
	Girth in cm	10-12	12-14	14-16
Acer campestre (Ac)		5	8	-
Acer campestre 'Burgk' (ACE)		1	1	-
Alnus glutinosa (Ak)		2	2	-
Betula pendula (Bp)		8	14	-
Malus sylvestris (Ms)		-	6	5
Prunus avium (Pa)		5	3	-
Pyrus calleryana 'Chanticleer' (PcC)		-	4	2
Sorbus aria (Sa)		3	5	-
Sorbus aria 'Lutescens' (SAL)		2	4	-
Sorbus aucuparia (Sau)		7	6	-
Sorbus 'Golden Wonder' (SGW)		2	-	-

All trees to have clear stems to 1.8m above ground level and 2.0m above ground level for extra heavy standard trees with well developed branching heads with a single, central leader and healthy, fibrous root systems. Trees shall be planted into pits of an appropriate size to accommodate the root system without restriction, backfilled with a 3:1 topsoil:compost mix and shall be secured to a machine rounded stake using 1 no. tree tie with rubber spacer. Finished height of stake shall not exceed 1/3 height of staked tree above ground. Foundation design of new buildings shall accommodate proposed tree planting in accordance with NIBC guidelines.

HEDGE SCHEDULE

Beech Hedge Schedule

Species	Age	Size in cm	Nos Req'd
Fagus sylvatica	1+1	60-80	487

Hedge to be planted as a double staggered row with plants set 300mm apart (5/linn) Plant material to be planted into prepared trenches backfilled with a 3:1 mix of multi-purpose topsoil to BS3882:2015 and proprietary planting compost with added slow release fertiliser. For the Beech hedge the trench shall be a minimum of 400mm wide by 400mm deep. The hedge lines shall be mulched after planting with a uniform depth of 50mm depth forest mulch.

BULB PLANTING

Name	Grade (cm)	Planting density
7200 Colchicum autumnale	10-12	80/m²
4080 Crocus autumnalis	8-10	80/m²
4040 Narcissus pseudonarcissus lobularis	10-11	40/m²

Bulbs to be scattered within the drifts indicated on the masterplan and planted where they fall to create a random and naturalised planting effect: Autumn Crocus (purple), Spring crocus (blue) and Daffodil (orange). Bulbs to be planted at the rate shown into ground which has been forked over to loosen it prior to planting. Bulbs shall be planted at the required depths for the particular species.

NATIVE PLANTING

NATIVE HEDGE SCHEDULE

Nr	Name	Height/cm	Age	Root	Pot/L
40	Acer campestre	40-60cm	1+1	B	
79	Corylus avellana	40-60cm	1+1	B	
355	Crataegus monogyna	60-80cm	1+0	B	
40	Ilex aquifolium	60-80cm	1+1	C	3L
79	Prunus spinosa	60-80cm	1+1	B	

Native species hedge mix to be planted at 5/lin in double staggered rows. To be pit planted into pits large enough to accommodate the root systems without restriction. Pits to be backfilled with a 3:1 topsoil:compost mix.

NATIVE SHRUB MIX SCHEDULE

Nr	Name	Height/cm	Age	Root	Pot/L
67A	Cornus sanguinea	60-80cm	1+1	B	
338	Corylus avellana	60-80cm	1+2	B	
1013	Crataegus monogyna	60-80cm	1+1	B	
845	Prunus spinosa	60-80cm	1+1	B	
167	Rosa arvensis	40-50cm	1+0	B	
167	Rosa canina	50-60cm	1+1	B	
167	Sambucus nigra	40-60cm	1+1	B	

NATIVE TREE & SHRUB MIX SCHEDULE

Nr	Name	Height/cm	Age	Root	Pot/L
177	Alnus glutinosa	60-80cm	1+1	B	
353	Betula pendula	60-80cm	1+1	B	
881	Corylus avellana	60-80cm	1+2	B	
353	Crataegus monogyna	60-80cm	1+1	B	
177	Ilex aquifolium	40-60cm	1+1	C	3L
177	Lonicera periclymenum 'Belgica'	60-80cm	1+1	B	
881	Prunus avium	60-80cm	1+1	B	
881	Quercus robur	60-80cm	1+1	B	
353	Sorbus aucuparia	60-80cm	1+1	B	

Native species shrub mix shall be planted into 450mm depth, good quality clean topsoil incorporating organic compost and slow release fertiliser, over an uncompact sub-grade. Prior to planting, all bare-root plant stock shall be dipped into a suitable mycorrhizal plant dip in accordance with the manufacturers recommendations. Plants shall be planted in groups of 3-11 of a single species with the taller growing species to the back or the centre of the areas and the lower growing species to the edges of the areas.

All native species planting to be fitted with biodegradable mulch mats and undersown with the wildflower mix EPI specified adjacent.

REVA: Layout updated in line with Landscape Masterplan R-1586-28 POS Masterplan. Schedules updated. (EW) Jul 16

Client: **Bellway Homes**

Project: **Residential Development SPOFFORTH HILL, WETHERBY**

Drawing title: **Boundary POS, Bridleway & Northern Link**

Scale: **As Shown** Date: **May 16** EW Drawing no: **R/1586/5A**

www.fda-landscape.co.uk

GRASS SEEDING

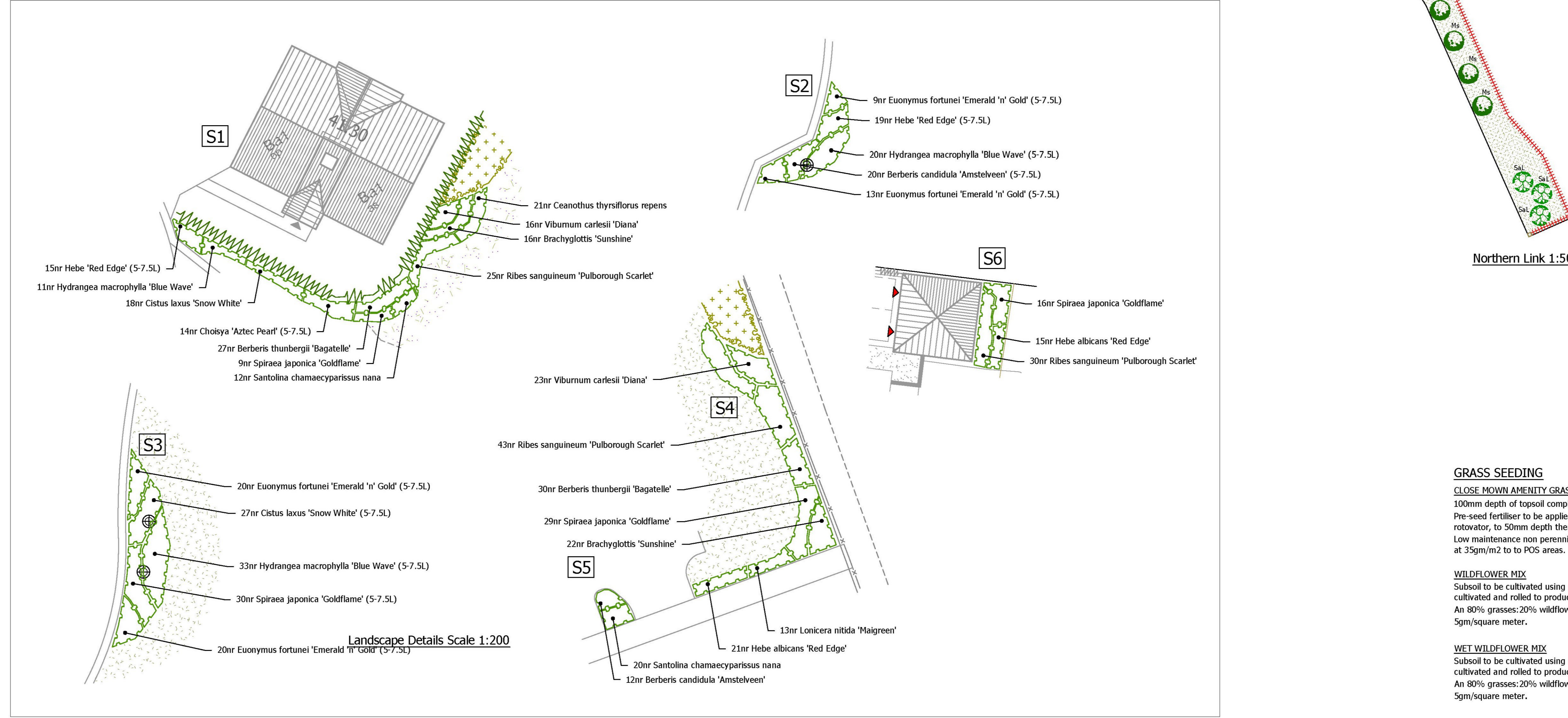
CLOSE MOWN AMENITY GRASS
100mm depth of topsoil complying with BS3882 to be spread to area. Pre-seed fertiliser to be applied at 50g/m². Soil to be cultivated using a disc harrow or rotowator, to 50mm depth then further cultivated and rolled to produce a firm seed bed. Low maintenance non perennial grass seed mix such as Germinal Seeds A4 mix to be sown at 35g/m² to to POS areas.

WILDFLOWER MIX

Subsoil to be cultivated using a disc harrow or rotowator, to 30mm depth then further cultivated and rolled to produce a firm seed bed. An 80% grasses:20% wildflower seed mix to be sown. Eg. Emmorgate Seeds, EM1 at 5g/m²/square meter.

WET WILDFLOWER MIX

Subsoil to be cultivated using a disc harrow or rotowator, to 30mm depth then further cultivated and rolled to produce a firm seed bed. An 80% grasses:20% wildflower seed mix to be sown. Eg. Emmorgate Seeds, EGB at 5g/m²/square meter.



Masterplan Scale 1:500

Landscape Details Scale 1:200